



CITY OF HIGHLAND PARK

Return to Excellence

Office of the Water Department

Director – Damon L. Garrett, PE

Metro Consulting Associates, LLC

2020 STATE REVOLVING FUND (SRF)

PUBLIC HEARING, NO. 2 OF 2, MONDAY, JUNE 3, 2019, 7:00 P.M.

PUBLIC HANDOUT

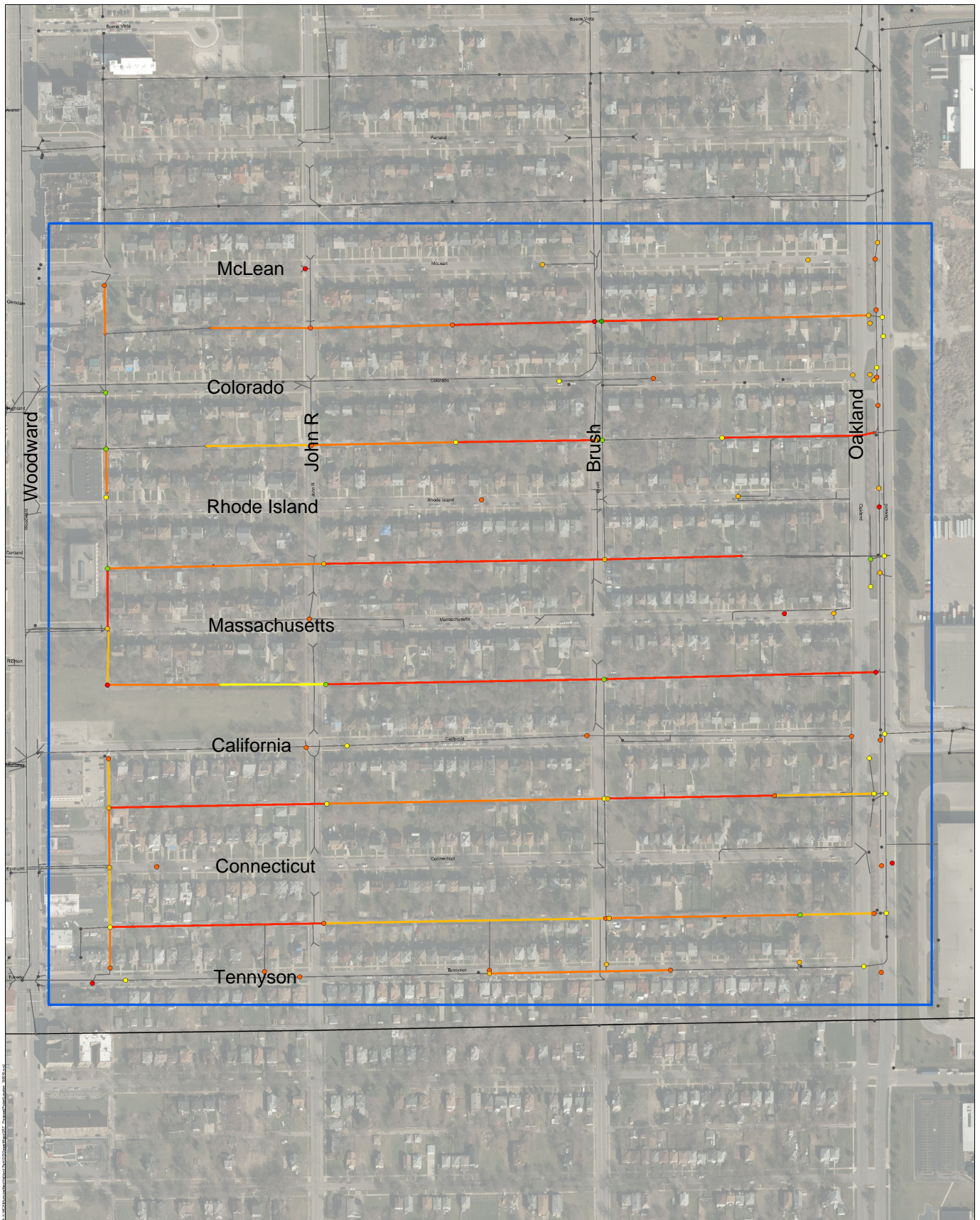
EFFECTS ON USER RATES

Sewer Rate Assumptions	FY2020	FY2021
Cost of Sewer Loan		\$ 2,500,000
Sewer Loan Costs (assuming interest rate of 2.0% over 30 years)		\$ 110,886
Projected Number of Metered Customers	2,943	3,090
Projected GLWA Sewer Costs	\$ 4,751,041	\$ 4,450,000
Sewer Rates	FY2020	FY2021
Sewer Readiness to Serve Charge (based on meter size)		
5/8"	\$ 4.13	\$ 4.98
3/4"	\$ 6.20	\$ 7.47
1"	\$ 10.33	\$ 12.45
1-1/2"	\$ 20.65	\$ 24.90
2"	\$ 33.04	\$ 39.84
3"	\$ 66.08	\$ 79.68
4"	\$ 103.25	\$ 124.50
6"	\$ 206.50	\$ 249.00
8"	\$ 578.20	\$ 697.20
10"	\$ 867.30	\$ 1,045.80
12"	\$ 1,094.45	\$ 1,319.70
Sewer Rate	\$ 3.73	\$ 3.83
Stormwater/Drainage Rate per acre	\$ 346.78	\$ 356.08

Assumptions:

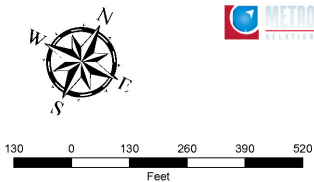
1. Assumes increased metered customers at growth rate of 5% per year
2. Decrease in GLWA Sewer Costs related to decreased GLWA Water charges resulting from improvements made to water infrastructure.
3. Stormwater/Drainage Rate per acre reflects the charges for wet weather sewer runoff. This rate is charged to all customers based on the acreage of their parcel.

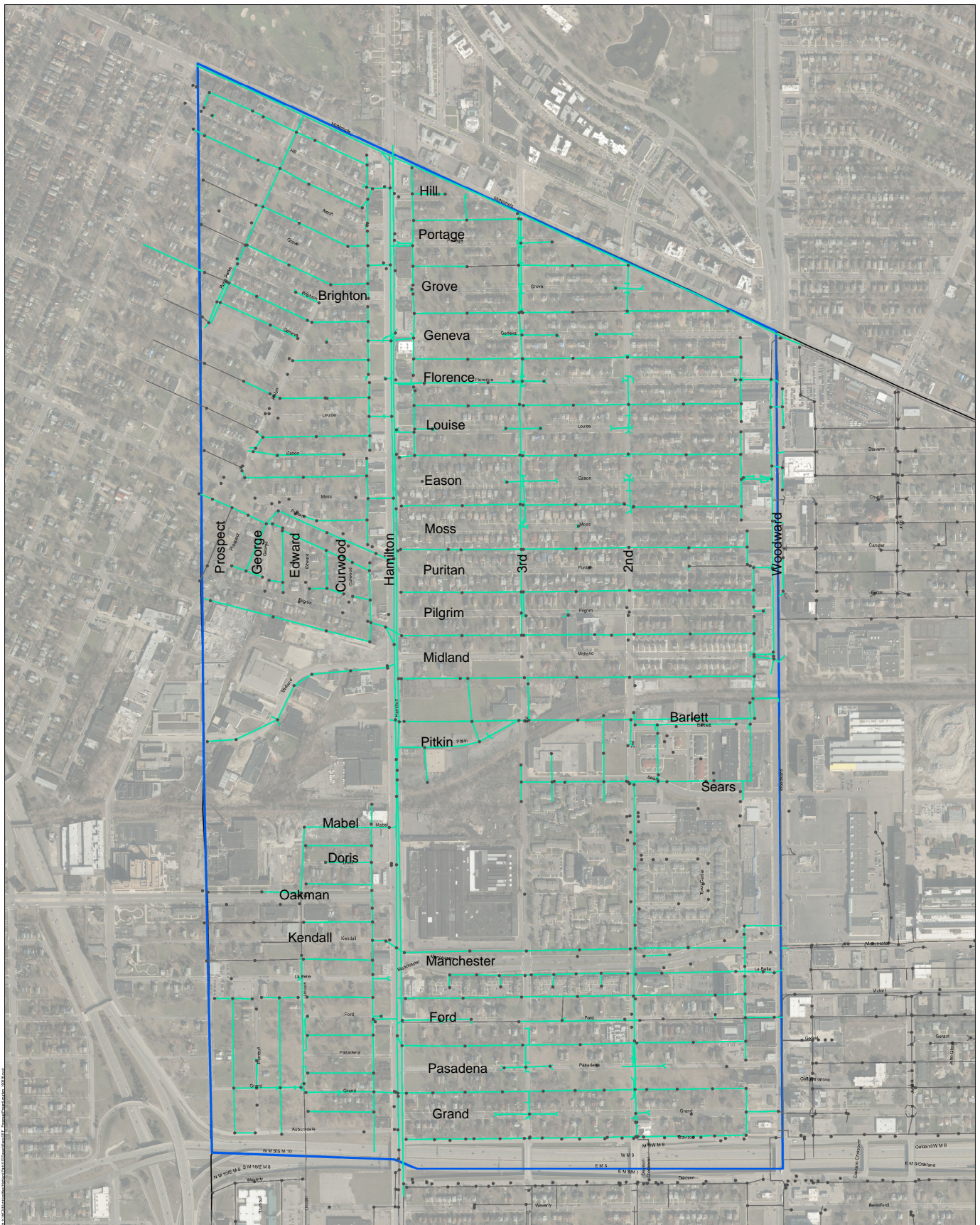
Highland Park Water Department
14110 Woodward Avenue
Highland Park, MI 48203



CITY OF HIGHLAND PARK **2020 SRF PROPOSED PROJECT LOCATIONS**

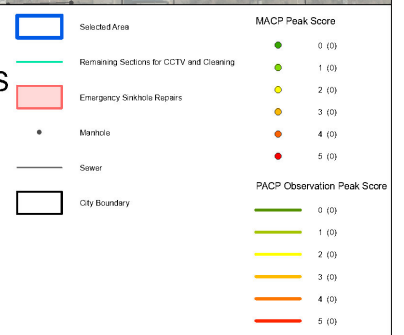
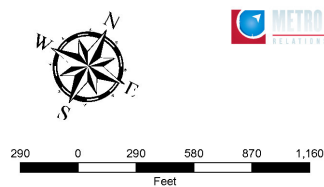
Page 1 of 3





CITY OF HIGHLAND PARK 2020 SRF PROPOSED PROJECT LOCATIONS

Page 2 of 3





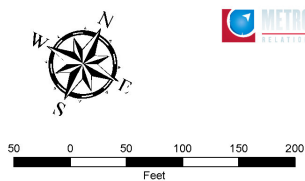
CITY OF HIGHLAND PARK **2020 SRF PROPOSED PROJECT LOCATIONS** Page 3 of 3



- Selected Area
- Remaining Sections for CCTV and Cleaning
- Emergency Sinkhole Repairs
- Manhole
- Sewer
- City Boundary

- MACP Peak Score**
- 0 (0)
 - 1 (0)
 - 2 (0)
 - 3 (0)
 - 4 (0)
 - 5 (0)

- PACP Observation Peak Score**
- 0 (0)
 - 1 (0)
 - 2 (0)
 - 3 (0)
 - 4 (0)
 - 5 (0)





CITY OF HIGHLAND PARK

Return to Excellence

Office of the Water Department

Director – Damon L. Garrett, PE

Metro Consulting Associates, LLC

SRF Project Cost Breakdown

Project No.	Project Title	Project Cost	Assumptions
1	Repairs in Selected Area	\$ 1,100,000.00	Assumes 50% of sections rated 5 receive point repairs, 35 manhole structures repaired
2	CCTV and Cleaning of Remaining Sections	\$ 600,000.00	Complete CCTV and cleaning in northwest corner of City to conclude project
3	Emergency Sinkhole Repairs along 2nd Avenue	\$ 255,000.00	Rough estimation due to several unknown factors
4	I/I Study for Entire City of Highland Park	\$ 250,000.00	I/I (Infiltration and Inflow) Study bidded to Consultant to collect and assess data to identify problems in the sewer system
5	Contingent Repairs	\$ 295,000	Remaining funding to complete repairs in locations throughout City evaluated by Water Department
Total Cost		\$ 2,500,000.00	